

# FIRE EVACUATION PLAN



## IN CASE OF FIRE

### 1. REPORT



Fire Alarm



Call the  
Fire Services

999

Fire Service  
Number

### 2. EXTINGUISH - if it is safe to do so



Extinguisher



Fire Blanket

### 3. EVACUATE



Follow the Emergency Evacuation  
Routes to the Fire Exits - or - Await assistance at  
your closest Safe Refuge

### 4. ASSEMBLE



Proceed to your  
Assembly Point

## ASSEMBLY POINT

YOUR ASSEMBLY POINT IS LOCATED AT:

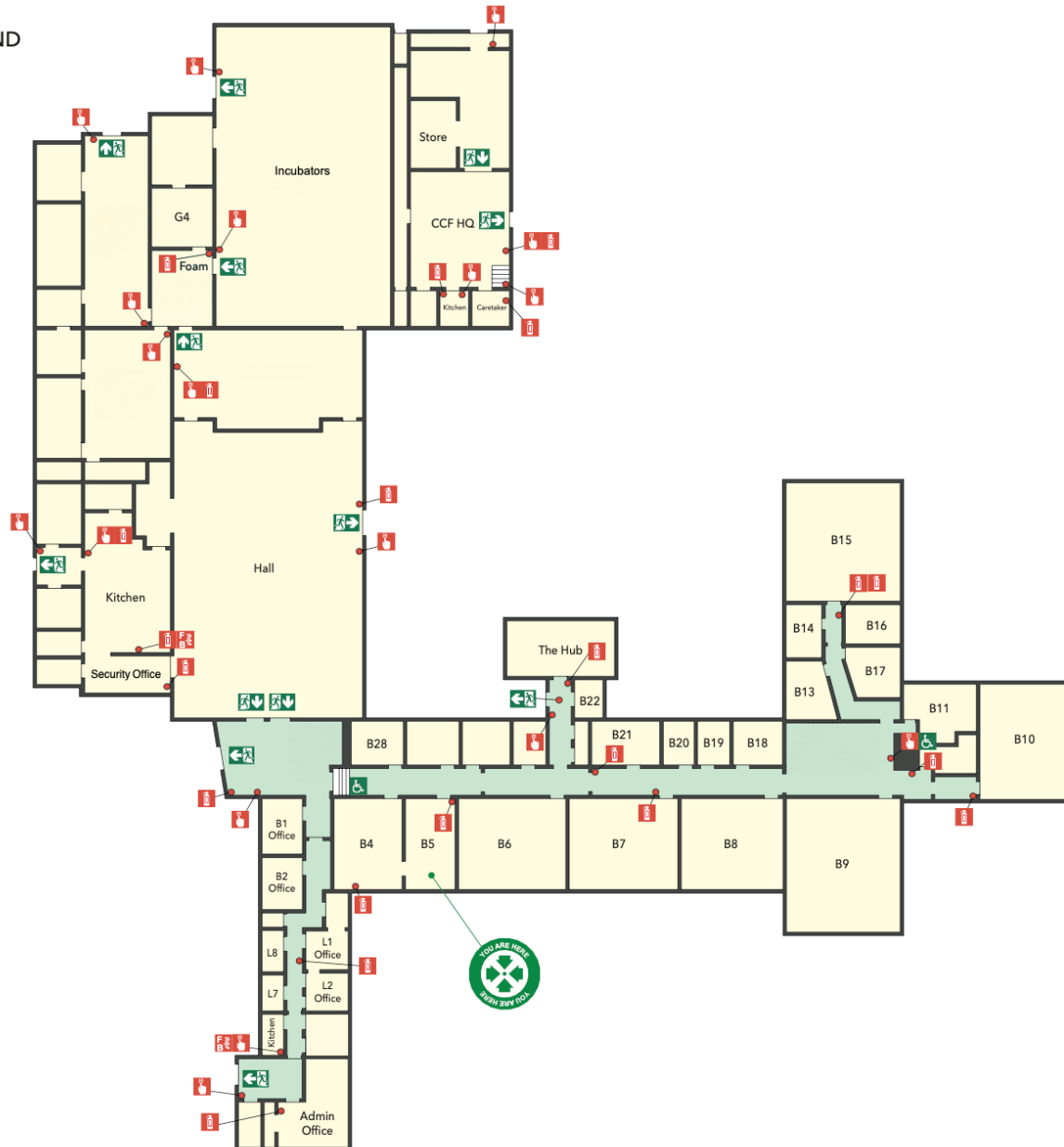
**THE PLAYGROUND**

## FOR YOUR SAFETY

DO NOT use the lift. Use the stairs.  
DO NOT stop to collect personal belongings.  
DO NOT re-enter the building unless told  
it is safe to do so.

# FIRE EVACUATION PLAN

MAIN BUILDING GROUND



## IN CASE OF FIRE

### 1. REPORT



Fire Alarm



Call the  
Fire Services

999

Fire Service  
Number

### 2. EXTINGUISH - if it is safe to do so



Extinguisher



Fire Blanket

### 3. EVACUATE



Follow the Emergency Evacuation  
Routes to the Fire Exits



- or -  
Await assistance at  
your closest Safe Refuge

### 4. ASSEMBLE



Proceed to your  
Assembly Point

## ASSEMBLY POINT

YOUR ASSEMBLY POINT IS LOCATED AT:  
The Parking

## FOR YOUR SAFETY

DO NOT stop to collect personal belongings.

DO NOT re-enter the building unless told  
it is safe to do so.